

# SUITE 201



**VIRTUAL TOUR AVAILABLE! CLICK HERE!**

**1606** STOCKTON STREET  
SAN FRANCISCO, CA 94133  
NORTH BEACH DISTRICT

**2ND FLOOR, CORNER MEDICAL OFFICE IN HISTORIC DANTE BUILDING OFFERS VERSATILE & CUSTOMIZABLE SPACE. THE HEART OF ICONIC NORTH BEACH.**

**PRICE:** \$6,000/MO.

**NET CHARGES:** I.G.

**NORTH BEACH DISTRICT**  
CROSS STREET: UNION STREET

**SPACE SIZE AVAILABLE**

**±1,500 SF**

OFFICE SPACE FOR LEASE

**NOW AVAILABLE  
IN THE HEART OF ICONIC NORTH BEACH**

Steeped in Italian heritage and Hollywood history, The Dante Building offers a highly-coveted branding opportunity and rare business location. The property is located across the street from historic Washington Square Park, San Francisco classic eatery Original Joe's and Tony's Pizza Napoletana—voted 'The Best Pizzeria In America' by *Forbes* magazine. **Nearby professional services include a wide mix of medical offices, media services, beauty salons and health/wellness services.**

**ADDITIONAL HIGHLIGHTS**

- Previously a Dental Office. Perfect for Startup or Small Staff.
- Excellent Window Frontage & Signage Opportunity.
- Vibrant Locale in One of The Top Dining & Shopping Districts.
- Convenient Access to Public Transit.



INCORPORATED | EST. 1922

This Statement with the information it contains is given with the understanding that all negotiations relating to the purchase, renting or leasing of the property described above shall be conducted through Blatteis Realty Company. The above information, while not guaranteed, has been secured from sources believed to be reliable. Blatteis Realty has not verified its accuracy and make no guarantees, warranty or representation regarding this information and it is published subject to the possibility of errors, omissions, changes of listing information including price, term, financing, or withdrawal without notice. We include projections, estimates, opinions and/or assumptions, for example only, and they may not represent current or future performance of the property. You should consult your tax and legal advisors before to verify the validity of estimates.

**DAVID BLATTEIS**

415.321.7488 | db@brsf.co | DRE #00418305

**sfretail.net**



*RENT CONCESSIONS AVAILABLE FOR TAKING PREMISES "AS IS"*

**INTERIOR**



INCORPORATED | EST. 1922

This Statement with the information it contains is given with the understanding that all negotiations relating to the purchase, renting or leasing of the property described above shall be conducted through Blatteis Realty Company. The above information, while not guaranteed, has been secured from sources believed to be reliable. Blatteis Realty has not verified its accuracy and make no guarantees, warranty or representation regarding this information and it is published subject to the possibility of errors, omissions, changes of listing information including price, term, financing, or withdrawal without notice. We include projections, estimates, opinions and/or assumptions, for example only, and they may not represent current or future performance of the property. You should consult your tax and legal advisors before to verify the validity of estimates.

**DAVID BLATTEIS**

415.321.7488 | db@brsf.co | DRE #00418305

**sfretail.net**



*RENT CONCESSIONS AVAILABLE FOR TAKING PREMISES "AS IS"*

**INTERIOR**



INCORPORATED | EST. 1922

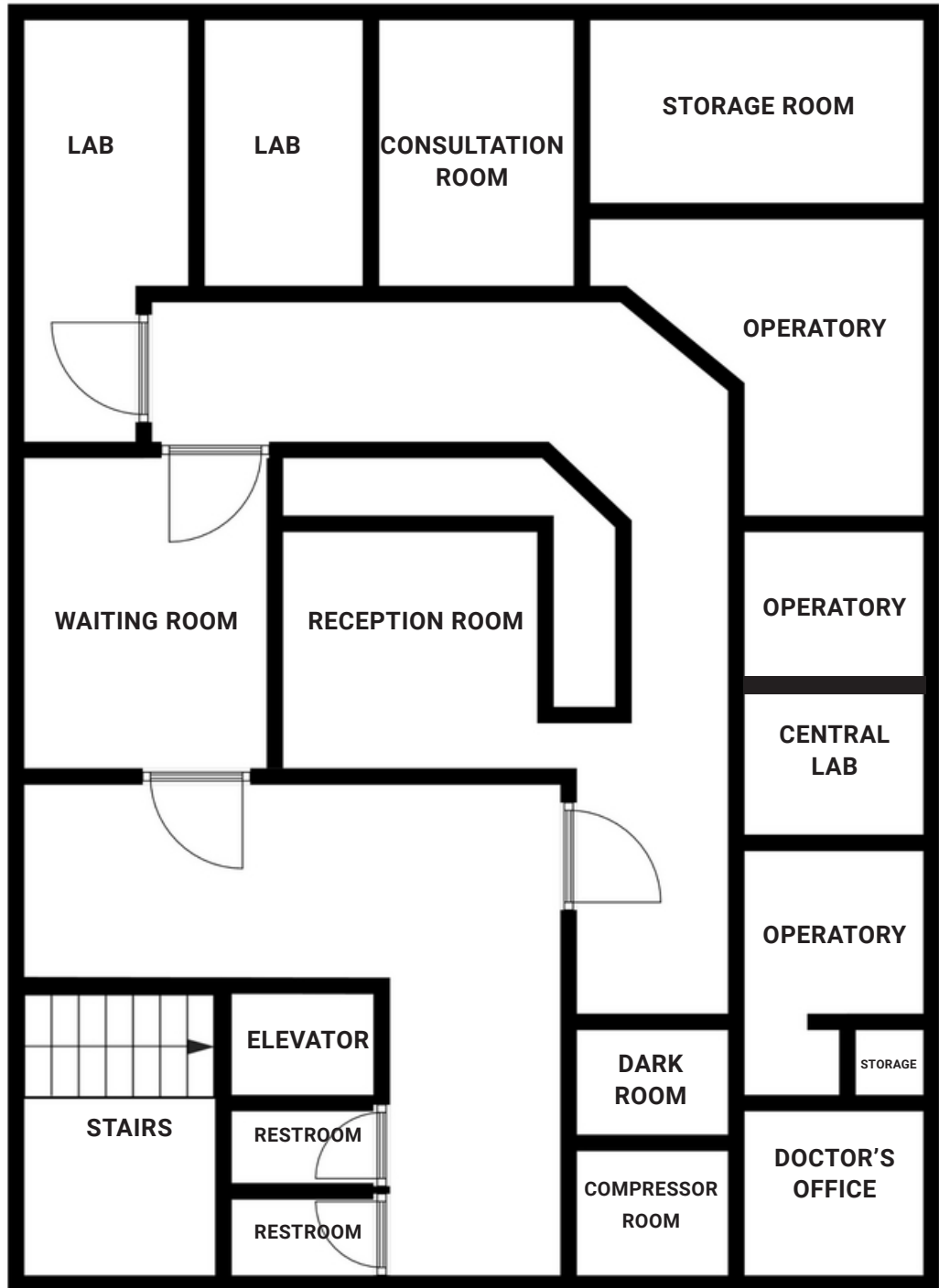
This Statement with the information it contains is given with the understanding that all negotiations relating to the purchase, renting or leasing of the property described above shall be conducted through Blatteis Realty Company. The above information, while not guaranteed, has been secured from sources believed to be reliable. Blatteis Realty has not verified its accuracy and make no guarantees, warranty or representation regarding this information and it is published subject to the possibility of errors, omissions, changes of listing information including price, term, financing, or withdrawal without notice. We include projections, estimates, opinions and/or assumptions, for example only, and they may not represent current or future performance of the property. You should consult your tax and legal advisors before to verify the validity of estimates.

**DAVID BLATTEIS**

415.321.7488 | db@brsf.co | DRE #00418305

**sfretail.net**

## FLOOR PLAN



INCORPORATED | EST. 1922

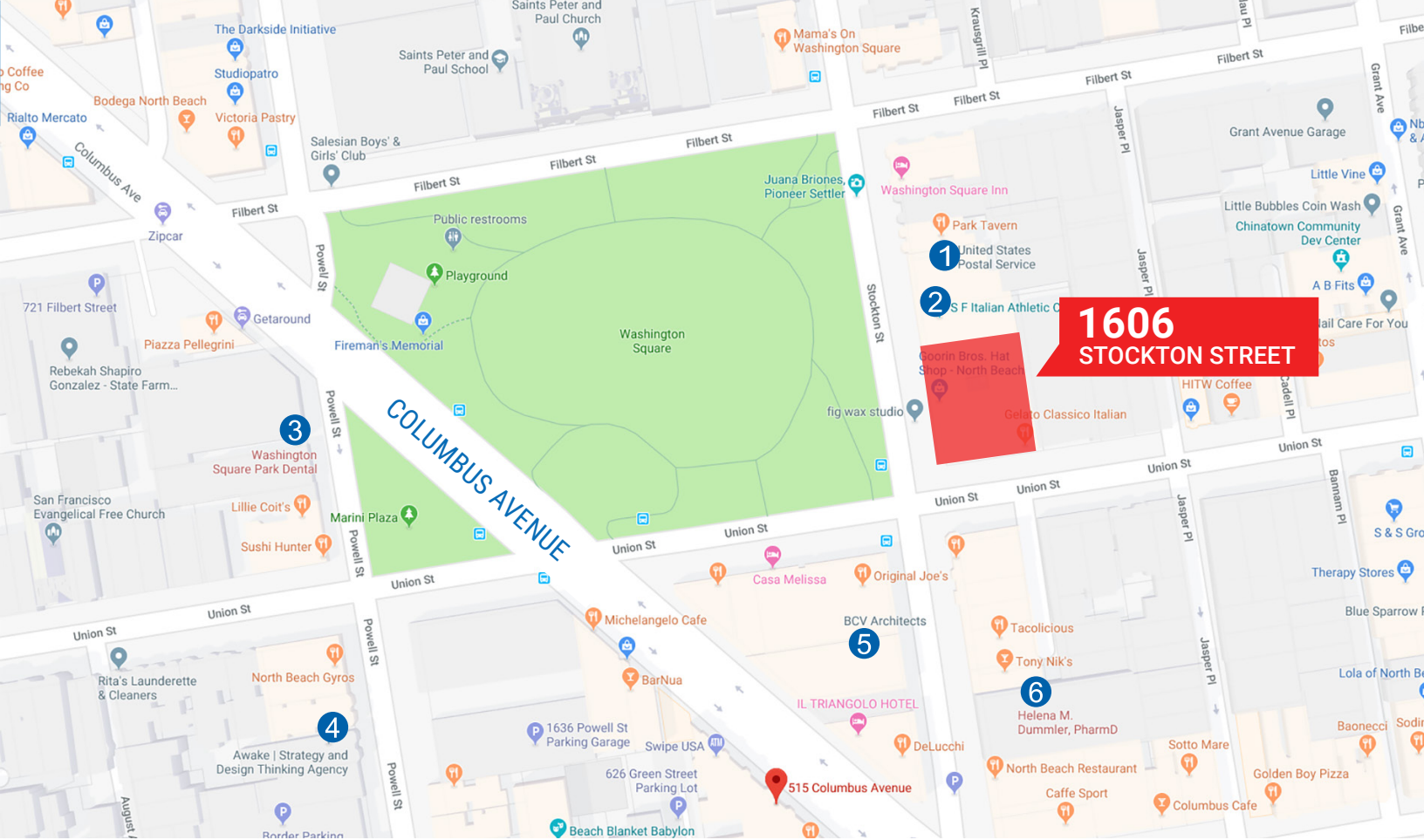
This Statement with the information it contains is given with the understanding that all negotiations relating to the purchase, renting or leasing of the property described above shall be conducted through Blatteis Realty Company. The above information, while not guaranteed, has been secured from sources believed to be reliable. Blatteis Realty has not verified its accuracy and make no guarantees, warranty or representation regarding this information and it is published subject to the possibility of errors, omissions, changes of listing information including price, term, financing, or withdrawal without notice. We include projections, estimates, opinions and/or assumptions, for example only, and they may not represent current or future performance of the property. You should consult your tax and legal advisors before to verify the validity of estimates.

**DAVID BLATTEIS**

415.321.7488 | db@brsf.co | DRE #00418305

[sfretail.net](http://sfretail.net)





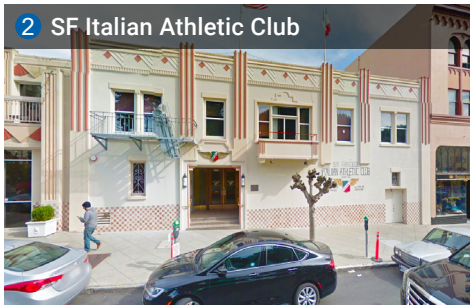
**1606  
STOCKTON STREET**

**POPULAR NEARBY TENANTS**

● Popular Nearby Tenants



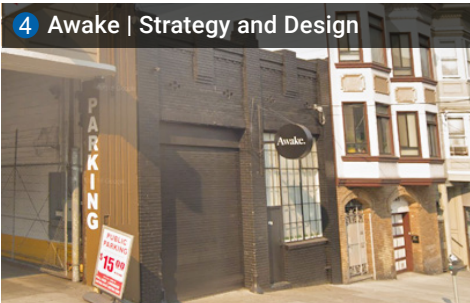
**1 US Postal Service**



**2 SF Italian Athletic Club**



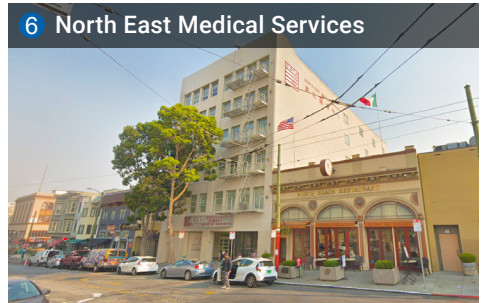
**3 Washington Square Dental**



**4 Awake | Strategy and Design**



**5 BCV Architects**



**6 North East Medical Services**



INCORPORATED | EST. 1922

This Statement with the information it contains is given with the understanding that all negotiations relating to the purchase, renting or leasing of the property described above shall be conducted through Blatteis Realty Company. The above information, while not guaranteed, has been secured from sources believed to be reliable. Blatteis Realty has not verified its accuracy and make no guarantees, warranty or representation regarding this information and it is published subject to the possibility of errors, omissions, changes of listing information including price, term, financing, or withdrawal without notice. We include projections, estimates, opinions and/or assumptions, for example only, and they may not represent current or future performance of the property. You should consult your tax and legal advisors before to verify the validity of estimates.

**DAVID BLATTEIS**

415.321.7488 | db@brsf.co | DRE #00418305

**sfretail.net**