

# SUITE D

PRO IMAGE PRINTING  
3216

SINCE  
1975

CARPET

TORS INC.

ENTRANCE

**3216** GEARY BOULEVARD  
SAN FRANCISCO, CA 94118

CENTRALLY-LOCATED, FLEXIBLE  
AND AFFORDABLE OFFICE SPACE

**PRICE: \$1,600/mo.**

**NET CHARGES: \$164/mo.**

**LAUREL HEIGHTS DISTRICT**  
BETWEEN PARKER AVENUE & SPRUCE STREET

SIZE

**±656 SF**

OFFICE SPACE FOR LEASE

**Please Do Not Disturb Employees.**

**NOW AVAILABLE FOR LEASE**

Situated in the upscale Jordan Park residential sub-division of Laurel Heights—south of the eastern edge of the Presidio. The property is centrally located within the thriving Geary Boulevard business corridor. Excellent access to Highway 101, I-80 & Golden Gate Bridge. Surrounded by a variety of restaurants and cafes. **Potential Off-Street Parking Available.**

**ADDITIONAL FEATURES**

- Flexible office space
- Includes 1 bathroom
- Centrally-located with convenient access to Highway 101, I-80 & Golden Gate Bridge
- Conveniently located on multiple bus lines



INCORPORATED | EST. 1922

This Statement with the information it contains is given with the understanding that all negotiations relating to the purchase, renting or leasing of the property described above shall be conducted through Blatteis Realty Company. The above information, while not guaranteed, has been secured from sources believed to be reliable. Blatteis Realty has not verified its accuracy and make no guarantees, warranty or representation regarding this information and it is published subject to the possibility of errors, omissions, changes of listing information including price, term, financing, or withdrawal without notice. We include projections, estimates, opinions and/or assumptions, for example only, and they may not represent current or future performance of the property. You should consult your tax and legal advisors before to verify the validity of estimates.

**DAVID BLATTEIS**

415.321.7488

dsblatteis@blatteisrealty.com

DRE #00418305

**sfbretail.net**

## FLEXIBLE, OPEN OFFICE SPACE WITH PRIVATE SIDE-BUILDING & OFF-STREET ENTRANCEWAY

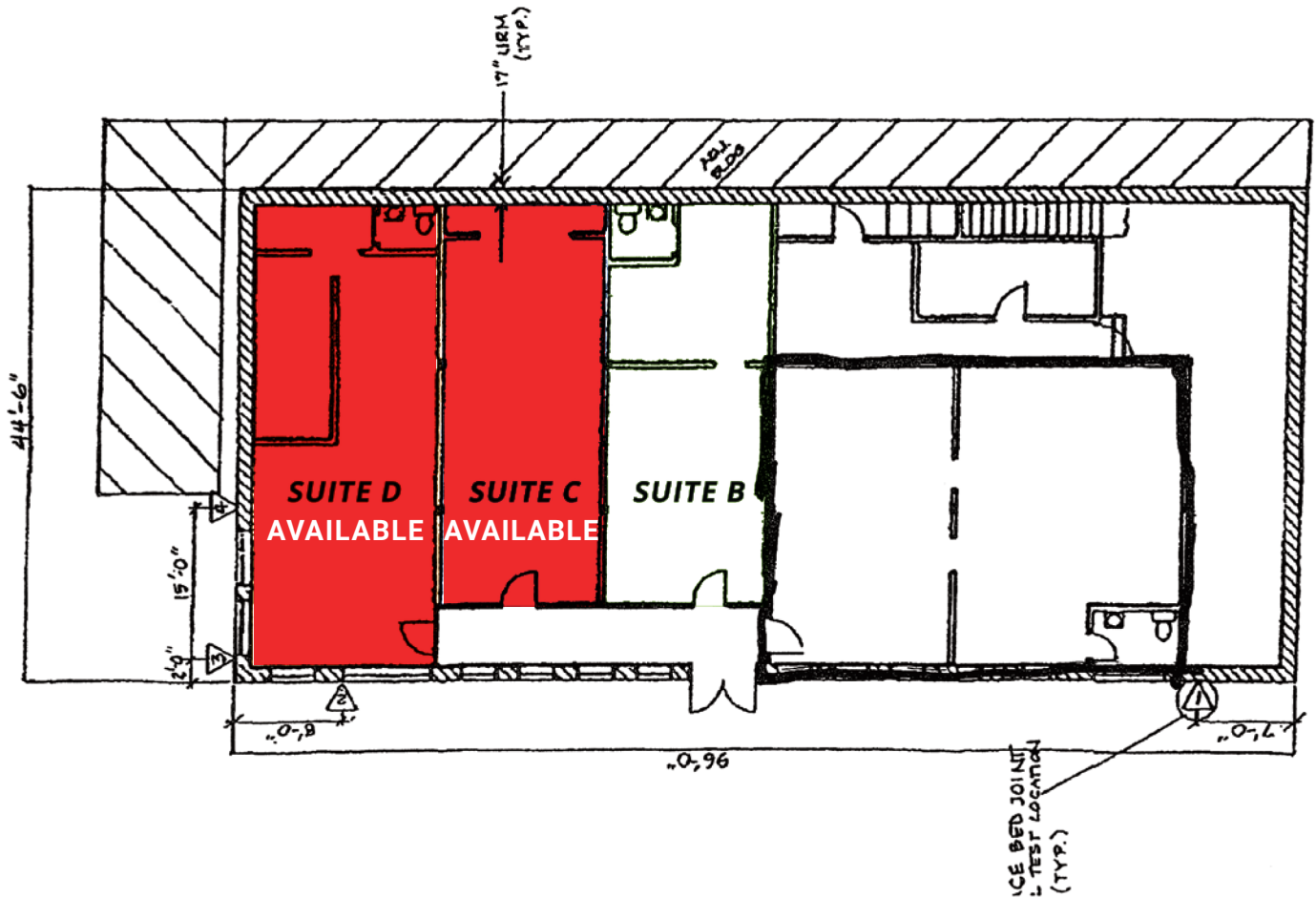


INCORPORATED | EST. 1922

This Statement with the information it contains is given with the understanding that all negotiations relating to the purchase, renting or leasing of the property described above shall be conducted through Blatteis Realty Company. The above information, while not guaranteed, has been secured from sources believed to be reliable. Blatteis Realty has not verified its accuracy and make no guarantees, warranty or representation regarding this information and it is published subject to the possibility of errors, omissions, changes of listing information including price, term, financing, or withdrawal without notice. We include projections, estimates, opinions and/or assumptions, for example only, and they may not represent current or future performance of the property. You should consult your tax and legal advisors before to verify the validity of estimates.

**DAVID BLATTEIS**  
415.321.7488  
dsblatteis@blatteisrealty.com  
DRE #00418305  
[sfretail.net](http://sfretail.net)

## FLOORPLAN

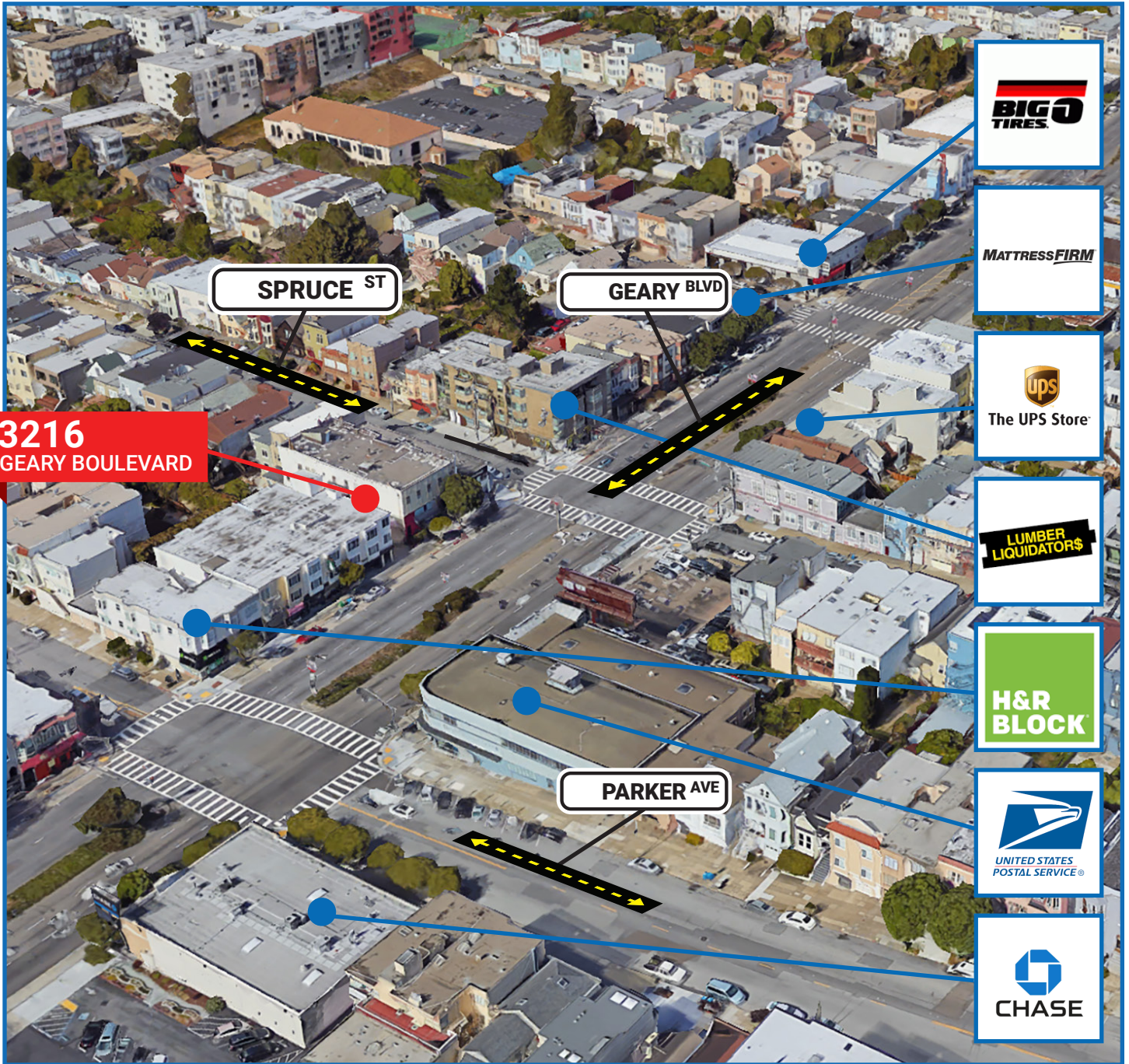


INCORPORATED | EST. 1922

This Statement with the information it contains is given with the understanding that all negotiations relating to the purchase, renting or leasing of the property described above shall be conducted through Blatteis Realty Company. The above information, while not guaranteed, has been secured from sources believed to be reliable. Blatteis Realty has not verified its accuracy and make no guarantees, warranty or representation regarding this information and it is published subject to the possibility of errors, omissions, changes of listing information including price, term, financing, or withdrawal without notice. We include projections, estimates, opinions and/or assumptions, for example only, and they may not represent current or future performance of the property. You should consult your tax and legal advisors before to verify the validity of estimates.

**DAVID BLATTEIS**  
415.321.7488  
dsblatteis@blatteisrealty.com  
DRE #00418305  
[sfretail.net](http://sfretail.net)

ONE OF SAN FRANCISCO'S BUSIEST CORRIDORS  
 APPROXIMATELY 54,000 DAILY PUBLIC TRANSIT COMMUTERS. EASY ACCESS TO HIGHWAYS.



INCORPORATED | EST. 1922

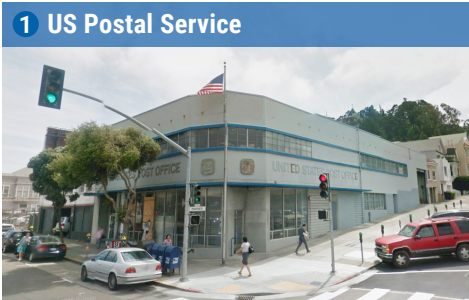
This Statement with the information it contains is given with the understanding that all negotiations relating to the purchase, renting or leasing of the property described above shall be conducted through Blatteis Realty Company. The above information, while not guaranteed, has been secured from sources believed to be reliable. Blatteis Realty has not verified its accuracy and make no guarantees, warranty or representation regarding this information and it is published subject to the possibility of errors, omissions, changes of listing information including price, term, financing, or withdrawal without notice. We include projections, estimates, opinions and/or assumptions, for example only, and they may not represent current or future performance of the property. You should consult your tax and legal advisors before to verify the validity of estimates.

**DAVID BLATTEIS**  
 415.321.7488  
 dsblatteis@blatteisrealty.com  
 DRE #00418305  
**sfretail.net**



● Popular Nearby Tenants

**POPULAR NEARBY TENANTS**



INCORPORATED | EST. 1922

This Statement with the information it contains is given with the understanding that all negotiations relating to the purchase, renting or leasing of the property described above shall be conducted through Blatteis Realty Company. The above information, while not guaranteed, has been secured from sources believed to be reliable. Blatteis Realty has not verified its accuracy and make no guarantees, warranty or representation regarding this information and it is published subject to the possibility of errors, omissions, changes of listing information including price, term, financing, or withdrawal without notice. We include projections, estimates, opinions and/or assumptions, for example only, and they may not represent current or future performance of the property. You should consult your tax and legal advisors before to verify the validity of estimates.

**DAVID BLATTEIS**  
 415.321.7488  
 dsblatteis@blatteisrealty.com  
 DRE #00418305  
**sfbretail.net**